



In This Issue:

BERARD
SINCE 1945
The Mega Transport Experts

- > Up River & Uphill | Cold Box & Vessel Transport
- > Load Out! | Electrical Building Load Out
- > Team Member Spotlight | Justin Salter

Up River & Uphill Cold Box & Vessel Transport



[SEE THE VIDEO
CLICK HERE](#)

Job Specs

Weight:

Vessel: 209,260 lbs.
Cold Box: 396,840 lbs.

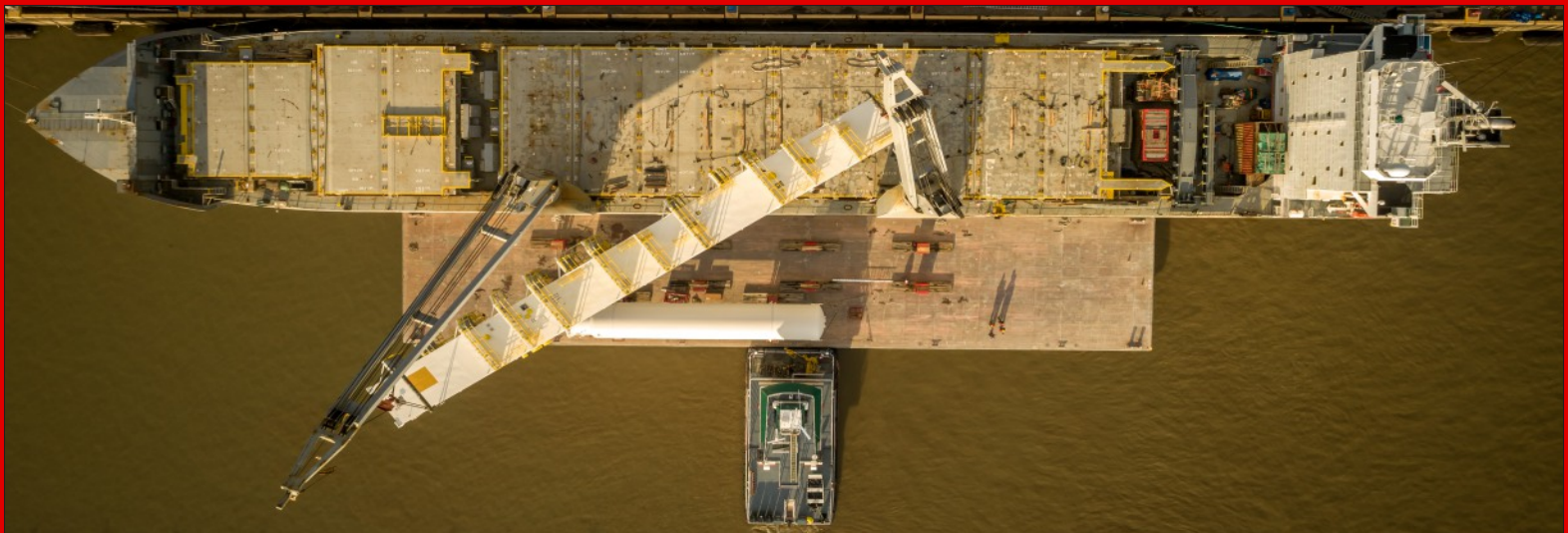
Dimensions:

82'- 3" L x 13'-10" W x 21'- 8" H
185' - 5" L x 25' W x 27' - 4" H

Equipment Used:

12 axle lines of SPMTs,
turntables, and barge ramps

Berard was recently tasked in transporting a cold box and vessel from the Port of New Orleans to Osceola, AR. Berard utilized a 250' x 54' deck barge transiting the Mississippi River to the roll-off site, and 12 lines of Goldhofer PST-SLE transporters with turntables for the final 2 mile route to the project site. Berard engineers monitored the river stages leading up to the project. Within 2 months the level dropped 20 feet, and was forecasted to drop another 7 feet before the barge arrived on site. Berard quickly derived a solution by adding limestone to the riverbank, and using a 180' x 54' spud barge with a ramp system to improve the incline to the dock. In a single day, both units were safely rolled off from the barge to the dock and the next day both units were delivered to the awaiting cranes at the construction site; a perfect execution with a perfect plan for a variable river condition.





Load Out! Electrical Building Load Out



Job Specs

Weight:
Vessel: 167,800 lbs.

Dimensions:
26'- 9" L x 25'3" W x 15'- 10" H

Equipment Used:
6 axle lines of SPMTs, barge ramps and winch trucks

When major electrical fabricators need someone they can trust, they count on the Berard team. Berard was tasked with loading out this electrical building destined for an offshore platform installation. Extreme care was taken to ensure the building remained level at all times as the team crossed over a levee system and onto a waiting deck barge. The team then went to work sea-fastening the cargo to the barge for its transit to a cargo ship where it would be loaded for its ocean voyage to the final destination.



> Team Member Spotlight

Justin Salter

Operations Manager | Houston



Justin Salter became part of the Berard team in February of 2018 as operations manager in our Houston, Texas facility. He's been a great team player and, together with the Houston team, has helped grow our company in the Houston market.

"I love working here because of the people. This team welcomed me with open arms and is full of passionate people who take pride in their work and what they work with. It makes my job much easier when people care this much about the equipment and projects." says Justin.

Justin is married to Crystal, and they have two children Hannah and Luke. He enjoys traveling, hunting, fishing, woodwork, and metal fabrication.



> Birthdays @ Berard

Happy Birthday!

Happy Birthday to These Dedicated Team Members!

**Nick Chastant
David Hargraves
Jordan Tyler**